



Institute of Environmental
Systems Research
University of Osnabrück



Governance of Transformation

Claudia Pahl-Wostl

***Co-Chair Global Water System Project
Professor Resources Management
Institute of Environmental Systems Research
University of Osnabrück***

Questions

- ▶ *What needs to be transformed?*
- ▶ *How and to which extent can transformative change be governed?*
- ▶ *What can/should be the role of science?*

Transformation towards

- ***Improved horizontal and vertical coordination***
- ***Respect of good governance principles***
- ***Flexible and adaptive implementation of policies***

Guiding Assumptions

- *There is and never will be any blueprint for „optimal“ governance of the WEF-Nexus -> no panaceas*
- *We need a diagnostic approach which maps similar classes of problems to similar classes of solutions*
- *More emphasis needs to be given to processes of change*

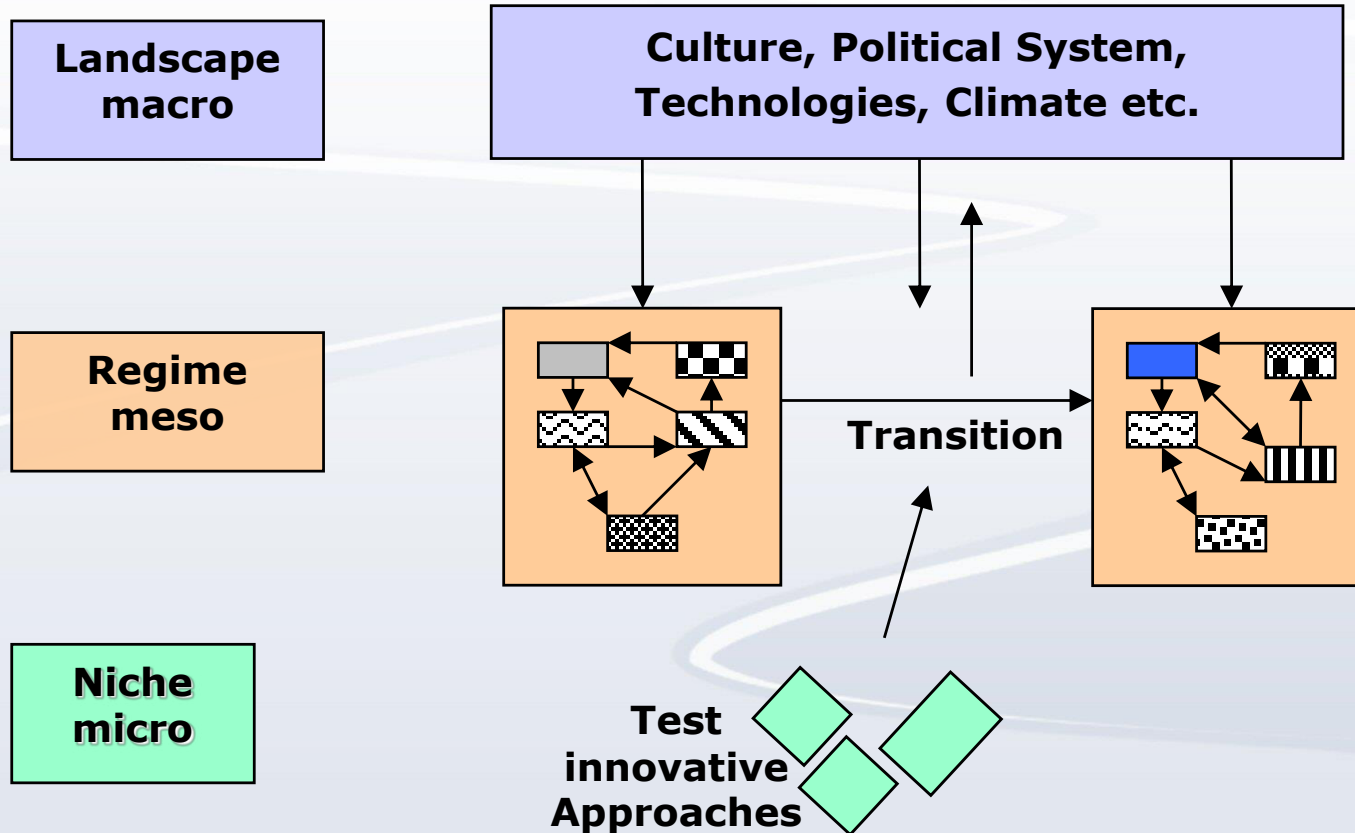


Institute of Environmental
Systems Research
University of Osnabrück

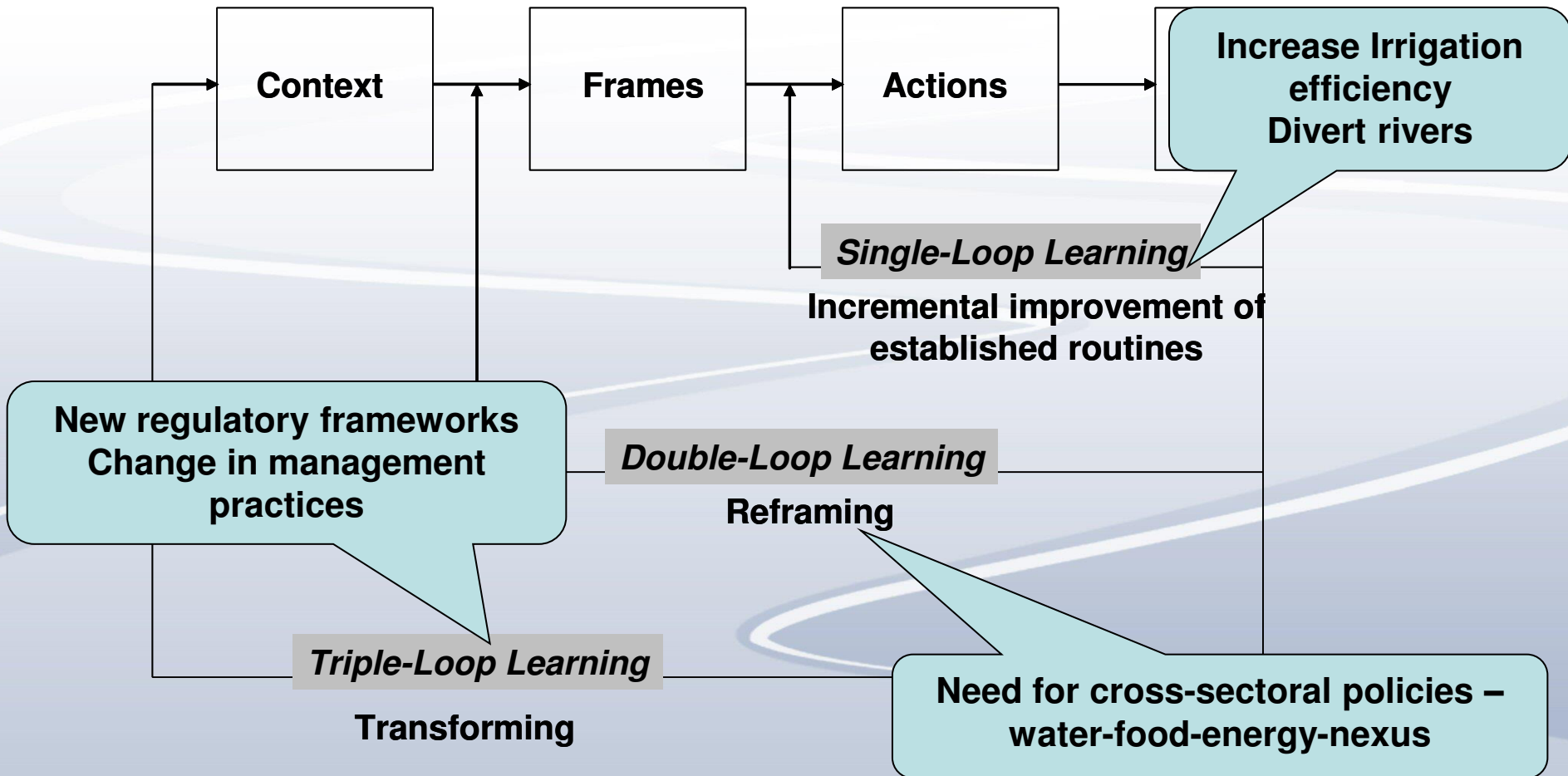


State of Scientific Understanding of Societal Transformations

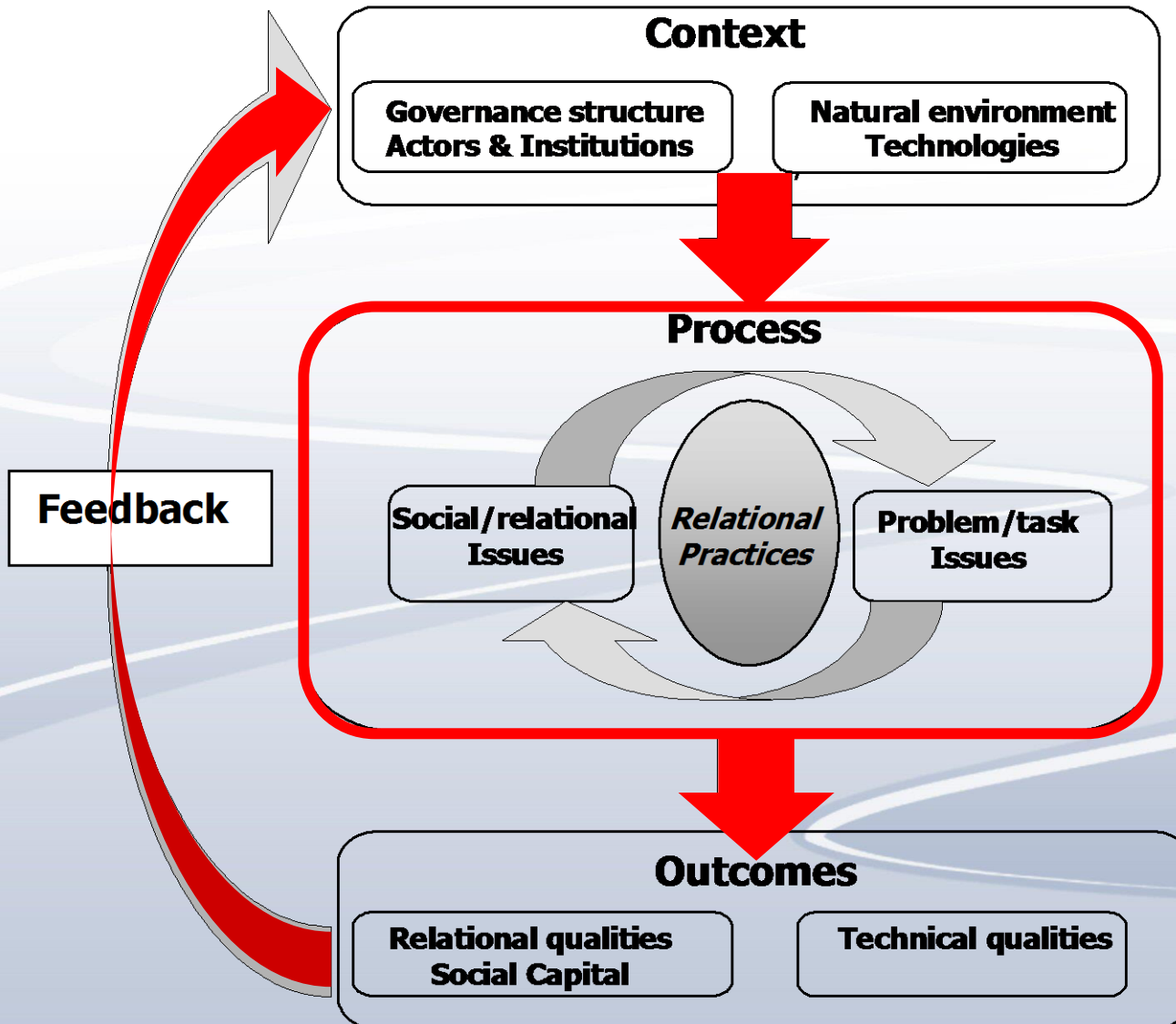
A Multi-level Concept of Transitions



An Evolutionary Perspective on Societal Change



A Relational Concept for Social Learning



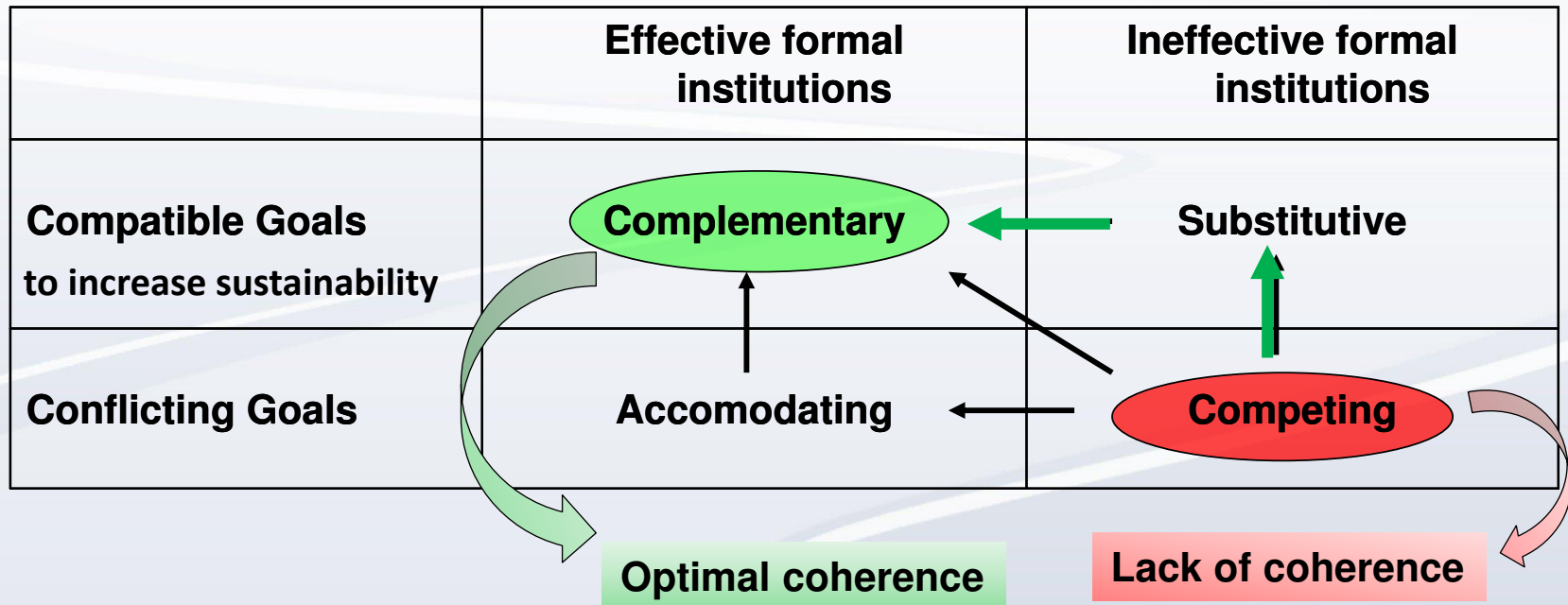
*How and to which extent can
transformative change be governed?*

*Transformative change includes
combination of purposeful design and
processes of emergence and self-
organization*

What is Required for Transformative Change?

- **Effective links between informal settings and formal policy processes**
 - **Informal spaces and diverse actor networks important to support integration of knowledge and experimentation with innovative approaches.**
 - **Connections between learning and policy processes that hinge on individual actors are fragile if innovative approaches are not codified in formal institutions and widely shared practices.**
- **Polycentric structures with flexible, effective coordination across sectoral and administrative boundaries**
- **Combination of governance modes (Markets, Bureaucratic Hierarchies, Networks)**
- **Continuity - change takes place on time scales of years – decades**

Trajectories of Change - Building Transformative Capacity





Institute of Environmental
Systems Research
University of Osnabrück



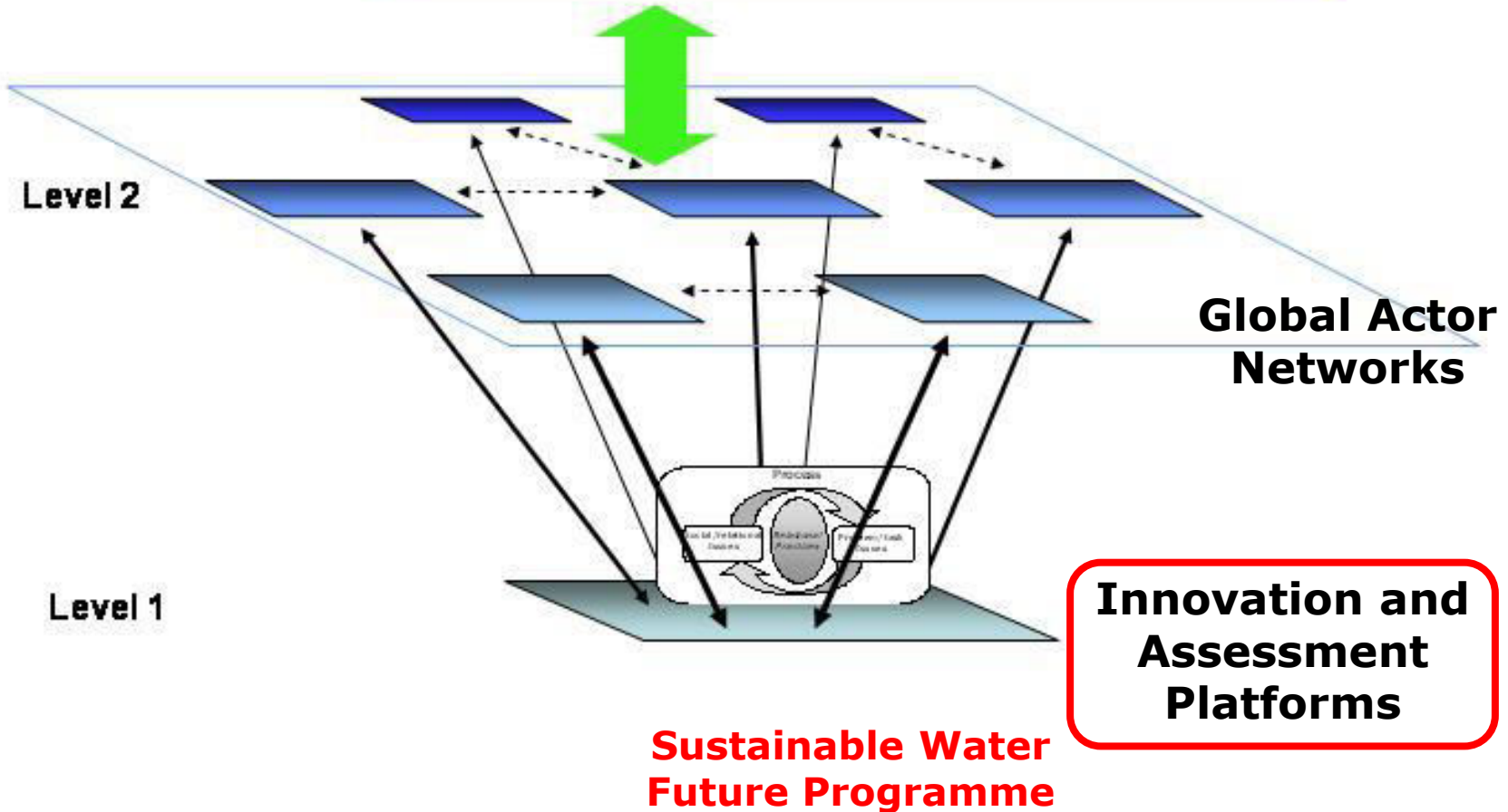
The Role of Science

The Scientific Challenge Ahead

- ▶ *Coordinated action research to study and support learning and innovation processes*
- ▶ *Co-design of sustainable development trajectories*
- ▶ *Development of indicators for progress to support reflexive processes at and across different levels*
- ▶ *Comparative studies – development of global knowledge bases*

Societal Systems Discourse Transformation

Level 3



Political Action in Demand

- ▶ ***Responsible governance – set monitorable targets and design and implement adaptive policy processes***
- ▶ ***Respect and monitoring of compliance with good governance principles***



Institute of Environmental
Systems Research
University of Osnabrück



***THANK YOU FOR YOUR
ATTENTION !***