



science
& technology

Department:
Science and Technology
REPUBLIC OF SOUTH AFRICA



Earth Observation Data & Services in support of the WEF Nexus

Workshop – Hilton, 21-23 Nov. 2016

Dr Clement Adjorlolo

SANSA in Perspective

SANSA Corporate Office

Corporate Support Programme

SANSA Earth
Observation
Directorate

SANSA Space
Operations
Directorate

SANSA Space
Science
Directorate

Space
Programme

Earth
Observation
Programme

Space
Operations
Programme

Space
Science
Programme

Goal 1: *Address South Africa's challenges through space services and products*

Goal 2: *Lead high-impact collaborative R&D on a national scale*

Goal 3: *Develop national human capacity and ensure transformation*

Goal 4: *Enhance the competitiveness of the South African space industry*

Goal 5: *Develop active global partnerships*

Goal 6: *Ensure the growth and sustainability of SANSA*

Goal 7: *Transform SANSA into a high performance Agency*

SANSA Earth Observation Programme

Earth Observation



- ✓ **Image acquisition**
- ✓ **Image distribution**
- ✓ **Value-added services**



Data Base Processing & Distribution

Data Acquisition



Decision Support Tools

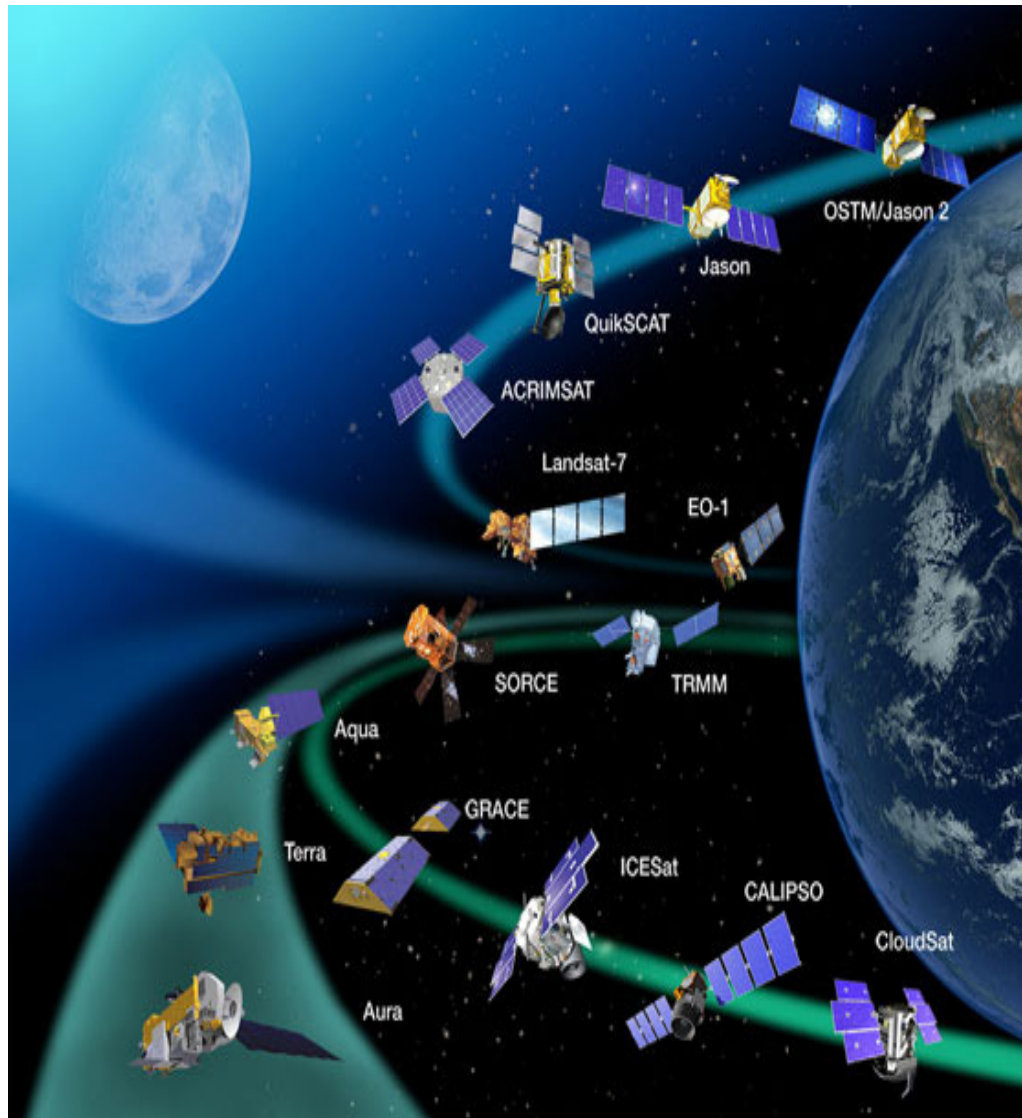


Distributor of other commercial data

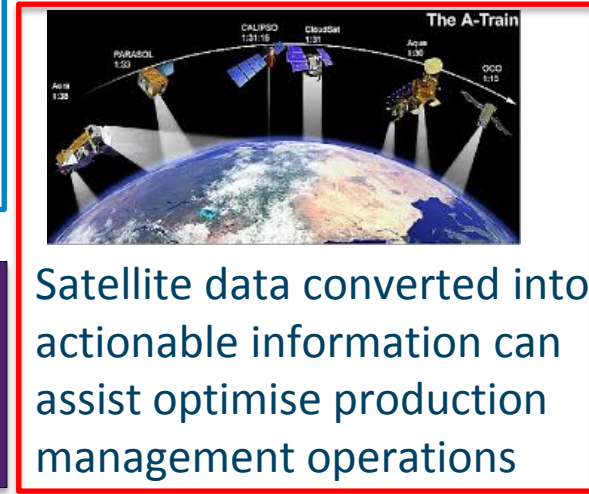
- RADARSAT-1
- GeoEye
- Ikonos
- QuickBird
- World View (1,2,3..)
- PLEIADES
- TerraSAR- X
- RAPIDEYE
- ALOS-2



Transforming Terabytes of EO-Data into Information



The Big Picture



**State of the Art
Monitoring Services**



Problem: Status Quo

Uncertainty in monitoring and risk assessment using traditional technologies and methods

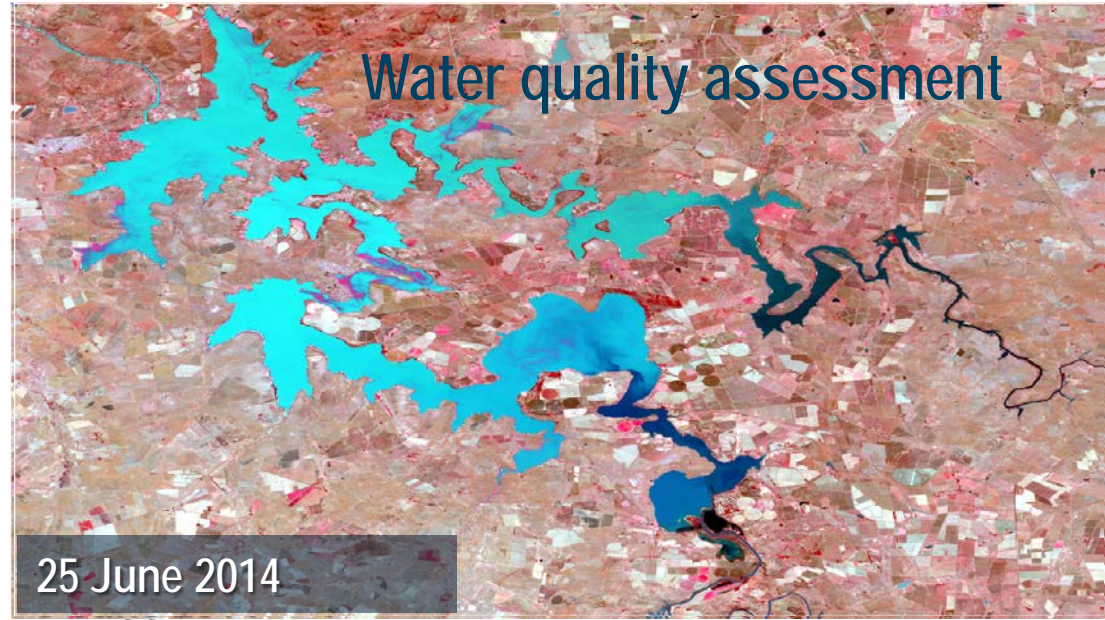
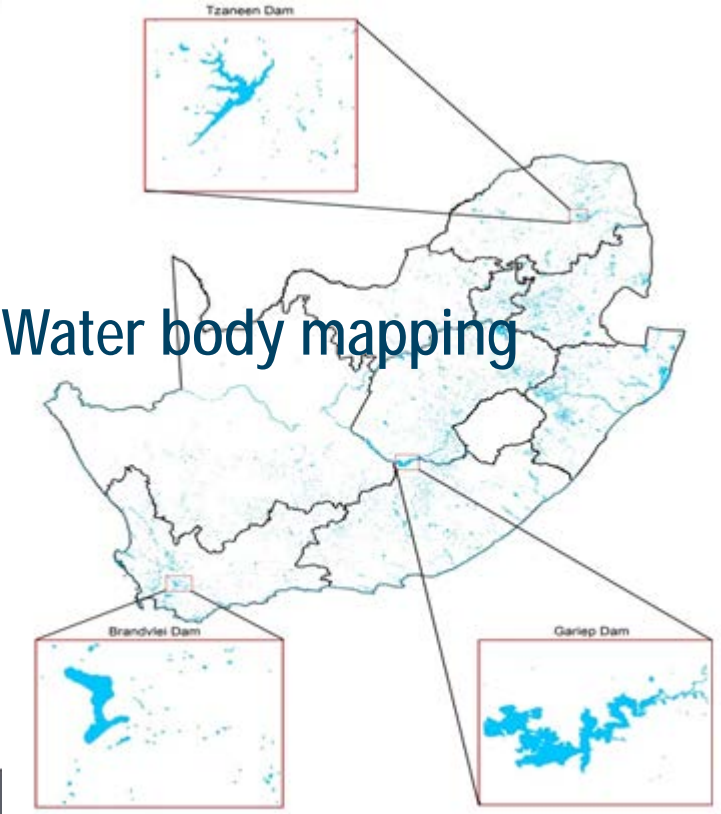
Solution:

Enhancing existing methods & techniques

Outcomes:

move projections beyond current capacity

National Value Added Products

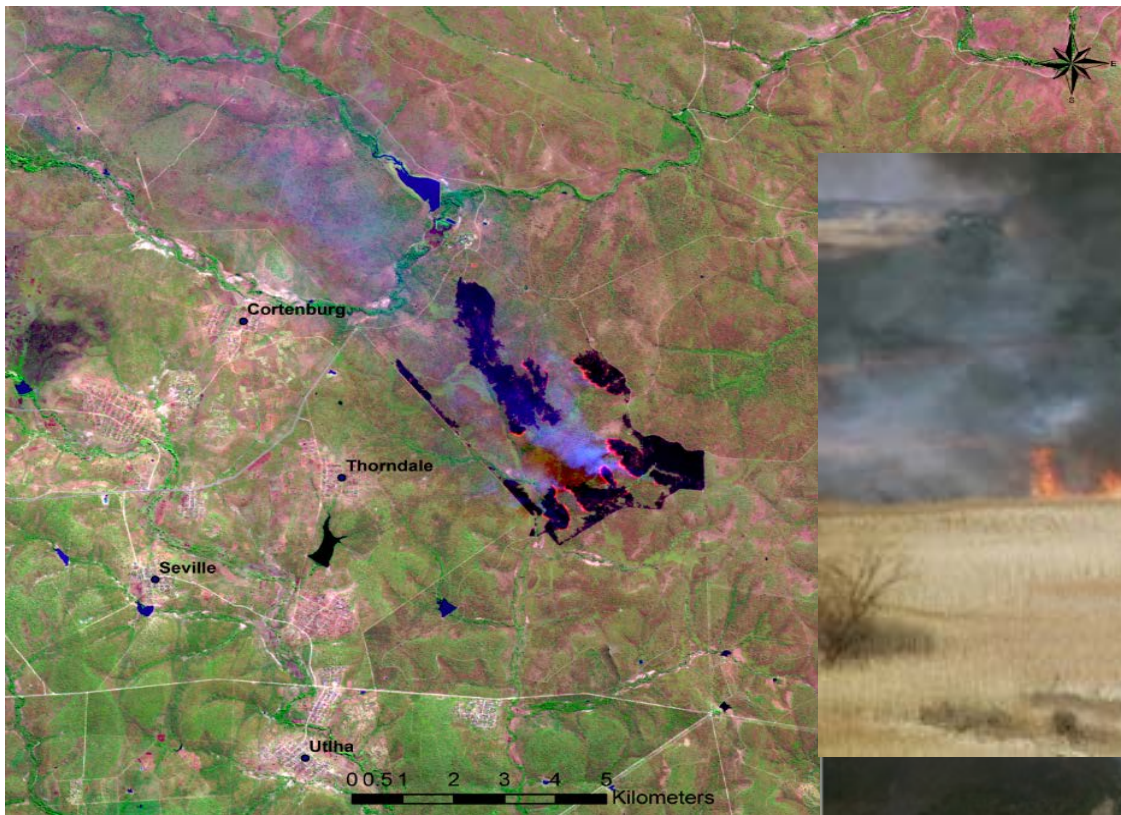


Mining applications

- Acid Mine Drainage/ Effluent Monitoring
- Mining Impact Assessment
- Monitoring Mining Activities



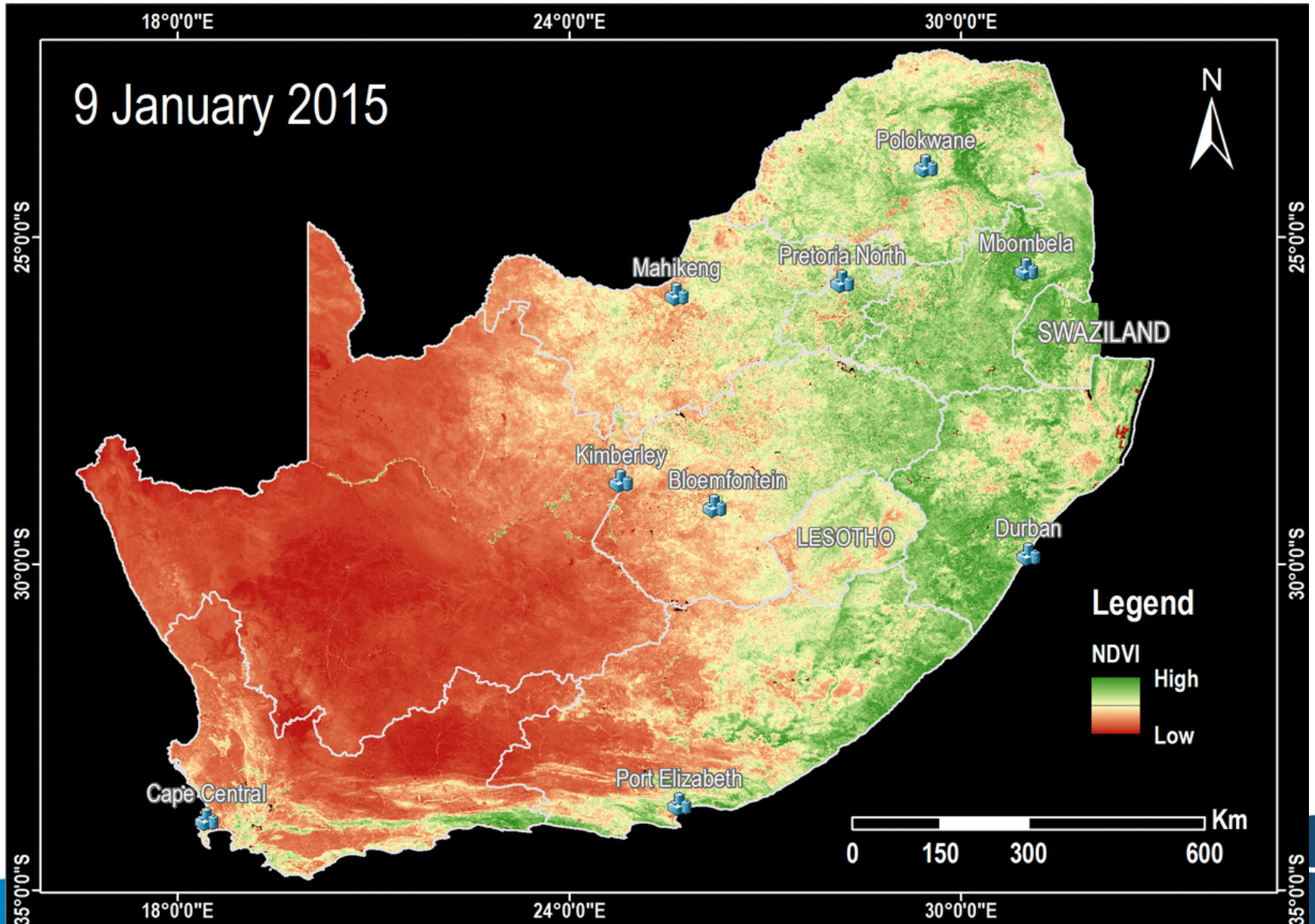
Fire Disaster Management Applications



- Fire detection
- Fire risk mapping
- Post fire assessment

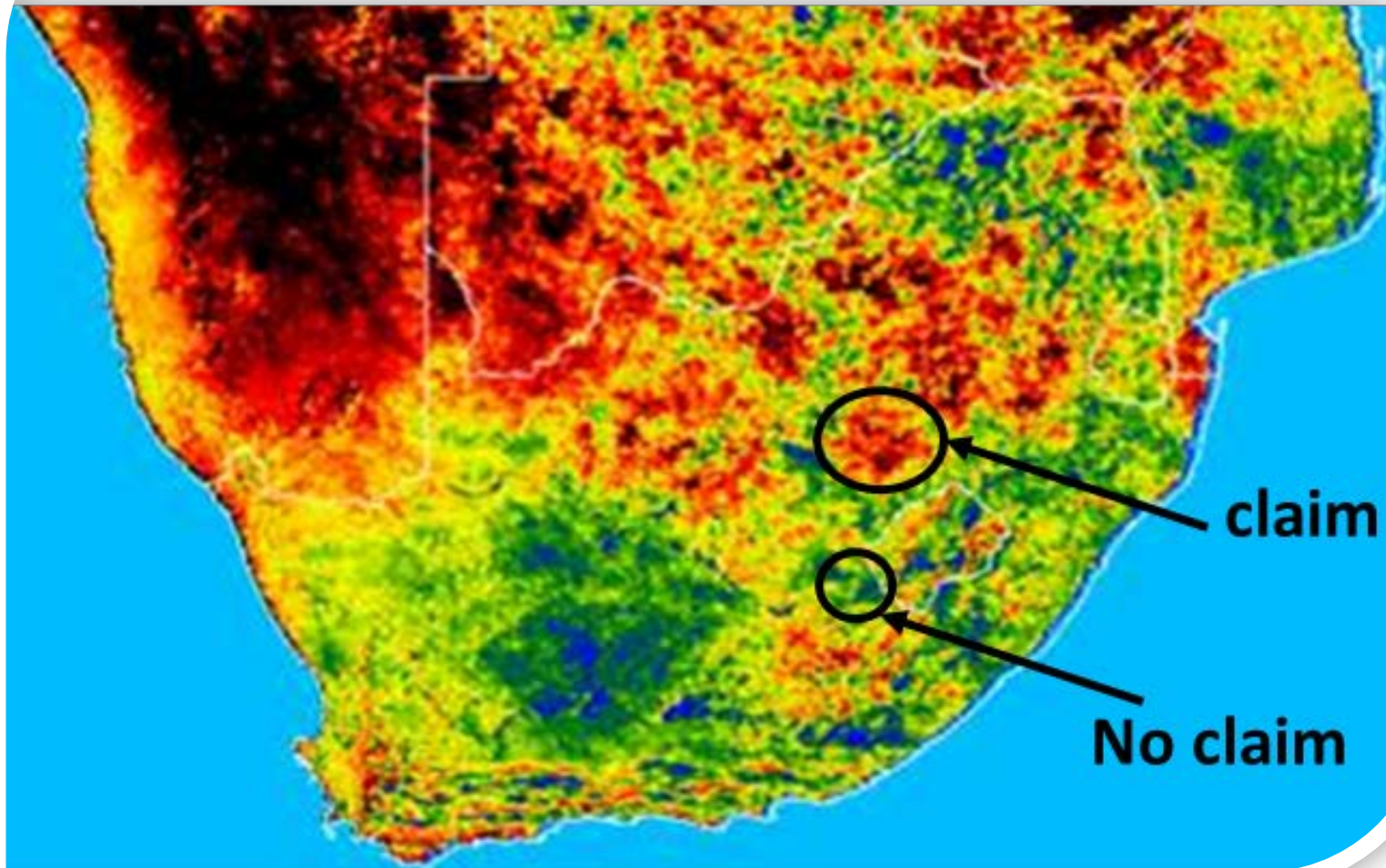
Application examples

Long-term time Series of Satellite-derived Vegetation Indices



Application examples

Growing Season ET relative to Long-Term Average



Air quality applications



- Emission inventory
- Aerosol concentration

Spatial planning applications

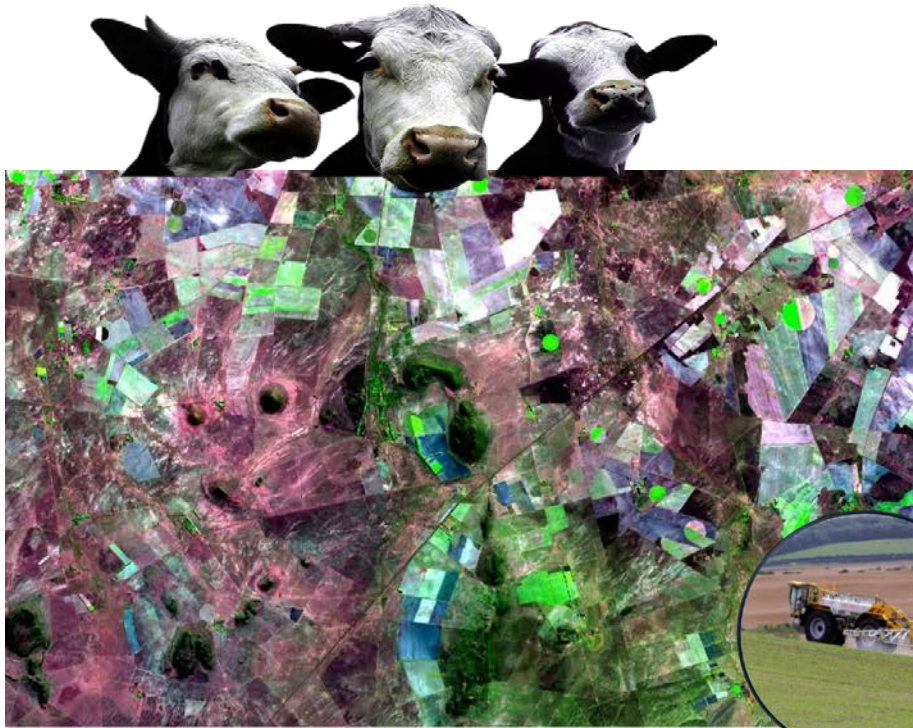


- Community development
- Infrastructure planning
- Service delivery
- Monitoring
- Policy formulation and implementation
- Urbanisation

Change detection – Human settlements, vegetation, mining



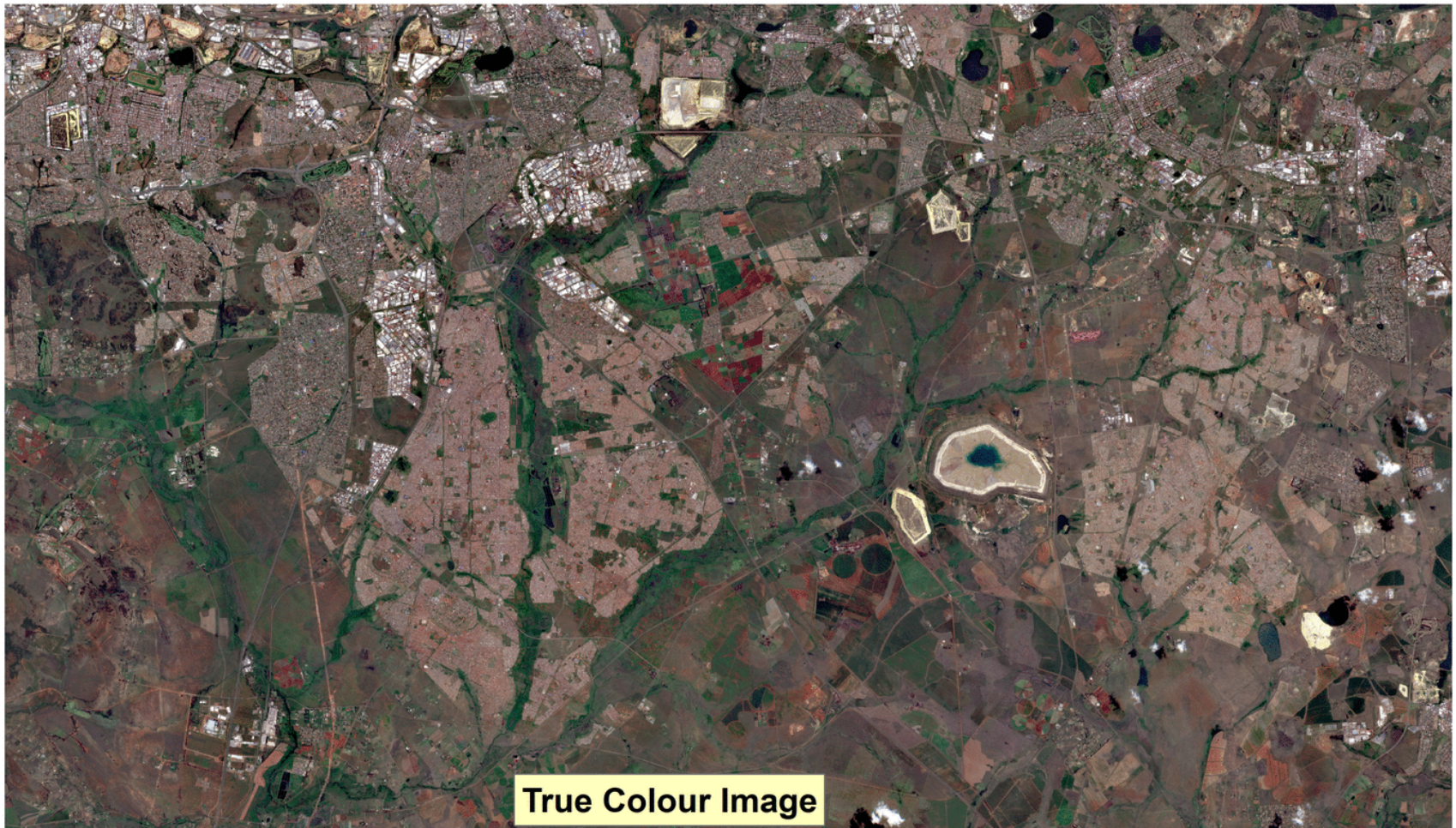
Agriculture/vegetation applications



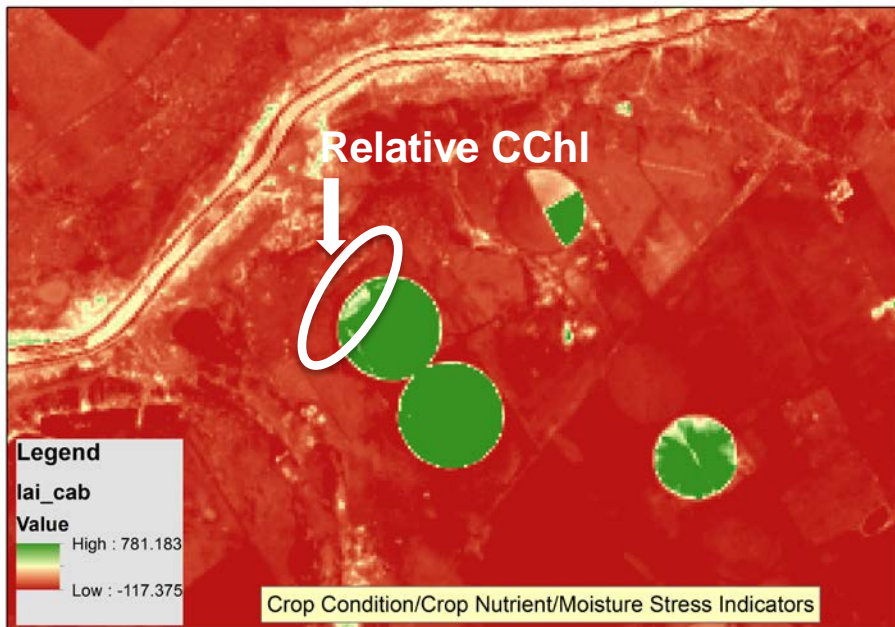
- Vegetation condition
- Land capability
- Yield estimation
- Deforestation
- Vegetation management

Monitoring using satellite-derived parameters

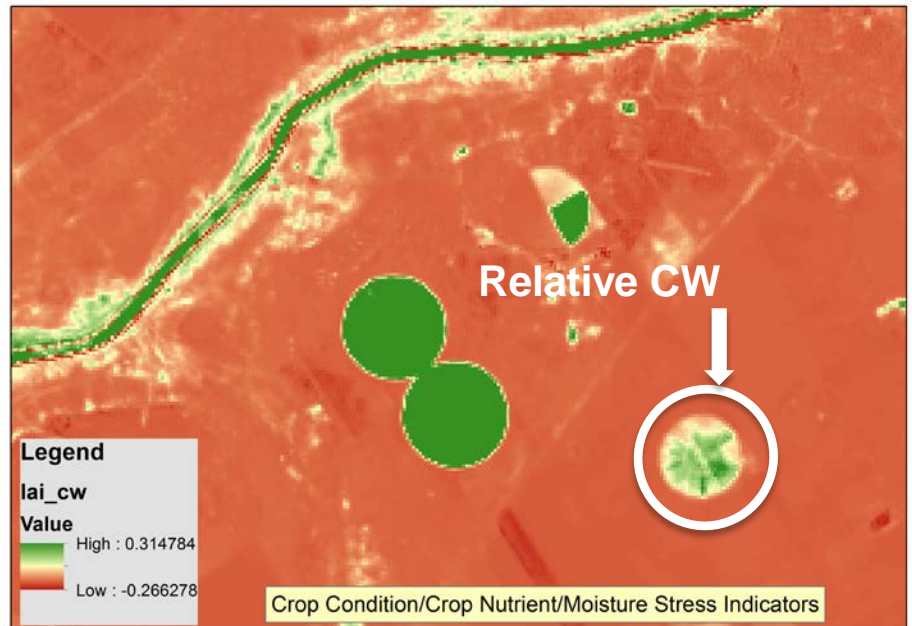
FAPAR; Fraction of Vegetation Cover; **Fraction of Soil**; Leaf Area Index (LAI);
Leaf Chlorophyll Content (CHL); Leaf Water Content



Relative Canopy Leaf Chlorophyll stress

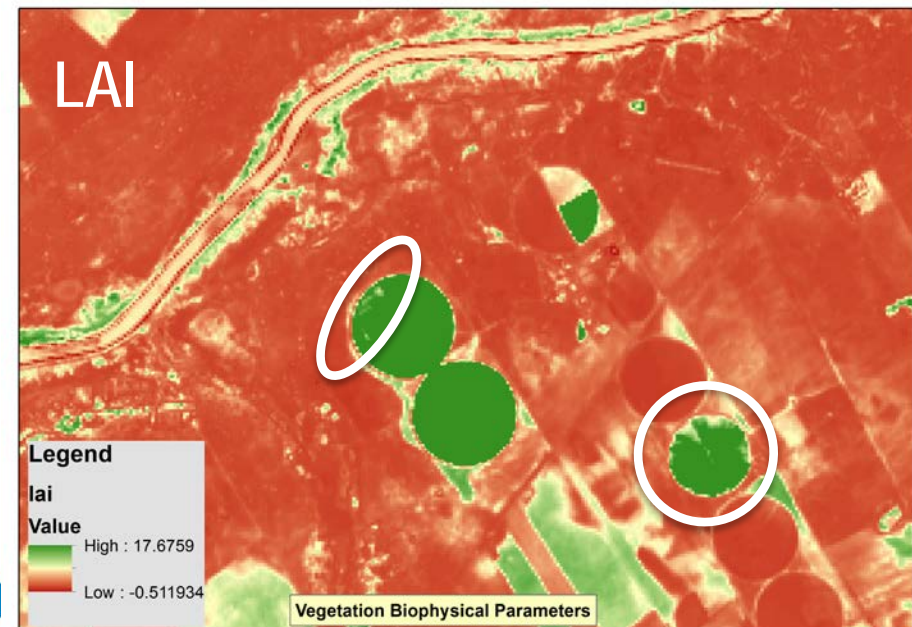


Relative Canopy Leaf Water Stress



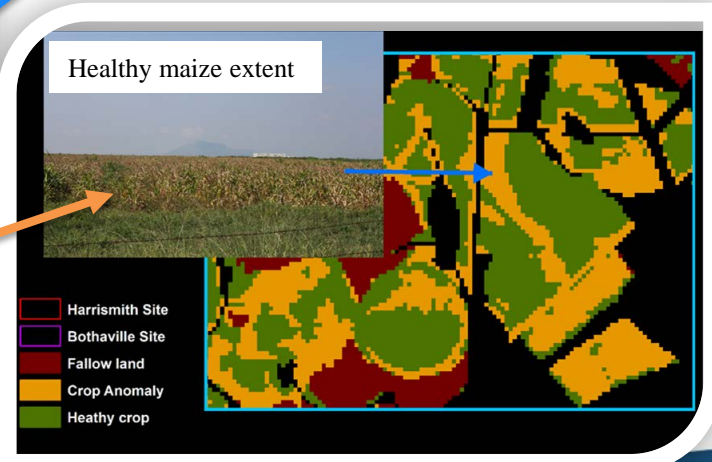
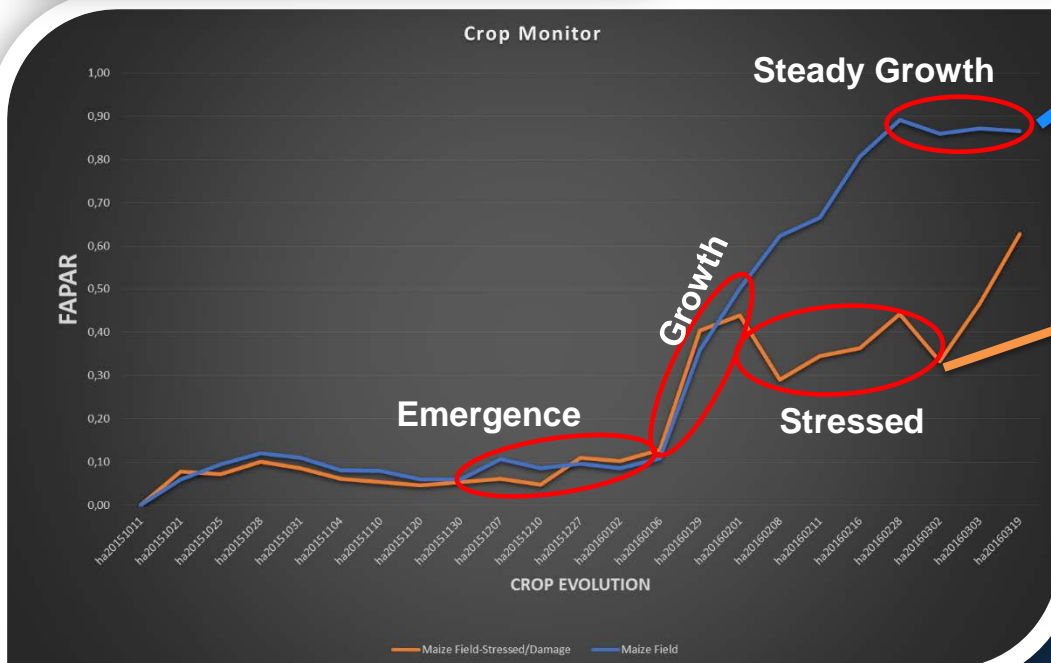
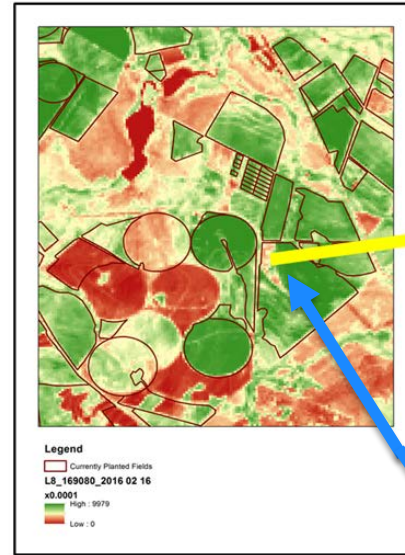
Summary

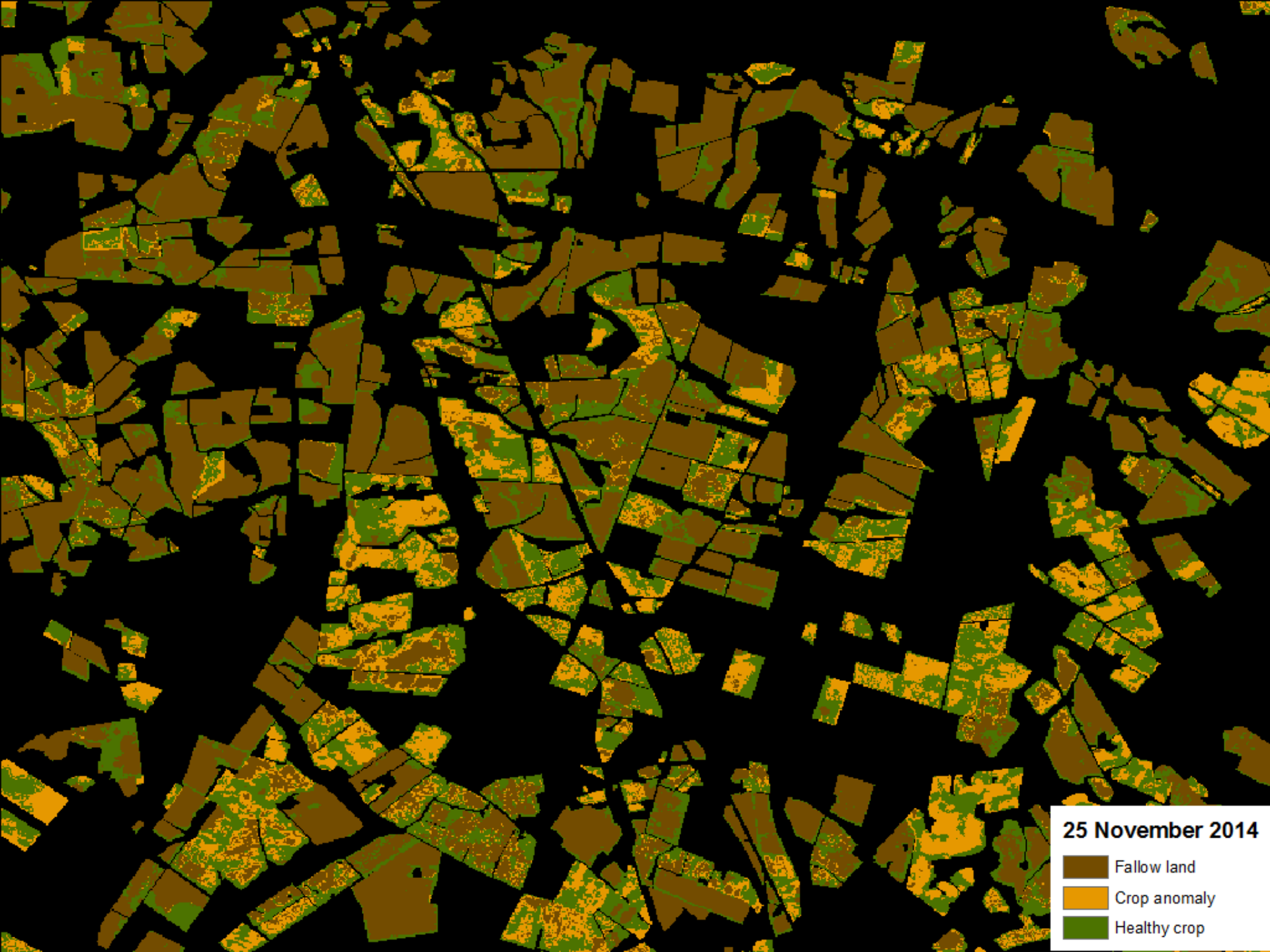
The two crop fields assessed above displayed symptoms of vegetation stress due to low relative canopy **leaf chlorophyll (CChI)** and relative canopy **leaf water (CW)** values. These two fields were analyzed using retrieved biophysical parameters from sentinel 2 image. The CChI and CW were modelled with the Leaf Area Index (LAI) values to assess whether the low values were, in fact, a cause of stress or a result of a sparse vegetation cover/density.



Application examples

Field verification & Validation





25 November 2014

-  Fallow land
-  Crop anomaly
-  Healthy crop

Users & Partnership: National and Regional Stakeholders



science & technology
Department:
Science and Technology
REPUBLIC OF SOUTH AFRICA



defence
Department:
Defence
REPUBLIC OF SOUTH AFRICA



agriculture, forestry & fisheries
Department:
Agriculture, Forestry and Fisheries
REPUBLIC OF SOUTH AFRICA



the dpsa
Department:
Public Service and Administration
REPUBLIC OF SOUTH AFRICA



human settlements
Department:
Human Settlements
REPUBLIC OF SOUTH AFRICA



environmental affairs
Department:
Environmental Affairs
REPUBLIC OF SOUTH AFRICA



performance monitoring and evaluation
Department:
The Presidency
REPUBLIC OF SOUTH AFRICA



mineral resources
Department:
Mineral Resources
REPUBLIC OF SOUTH AFRICA

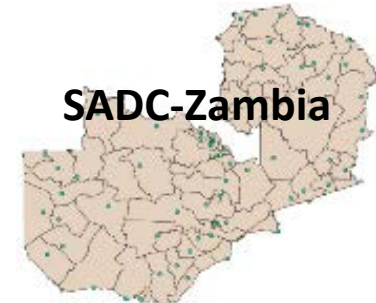


water & sanitation
Department:
Water and Sanitation
REPUBLIC OF SOUTH AFRICA

Service to National Government Departments



Geo-AfriGEOSS



FUNDISA Resources to MESA University Network



transport
Department:
Transport
REPUBLIC OF SOUTH AFRICA



basic education
Department:
Basic Education
REPUBLIC OF SOUTH AFRICA



higher education & training
Department:
Higher Education and Training
REPUBLIC OF SOUTH AFRICA



cooperative governance & traditional affairs
Department:
Cooperative Governance and Traditional Affairs
REPUBLIC OF SOUTH AFRICA



the doc
Department:
Communications
REPUBLIC OF SOUTH AFRICA



public enterprises
Department:
Public Enterprises
REPUBLIC OF SOUTH AFRICA



rural development & land reform
Department:
Rural Development and Land Reform
REPUBLIC OF SOUTH AFRICA



the dti
Department:
Trade and Industry
REPUBLIC OF SOUTH AFRICA

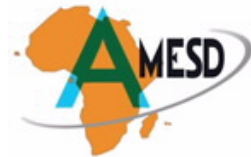
Earth Observation Users



International Partnerships



NARSS
National Authority for Remote Sensing and Space Sciences



EUMETSAT

AIRBUS

RCMRD

JRC

CNES



Algerian Space Agency

[Email: cadjorlolo@sansa.org.za](mailto:cadjorlolo@sansa.org.za)

Thank You