

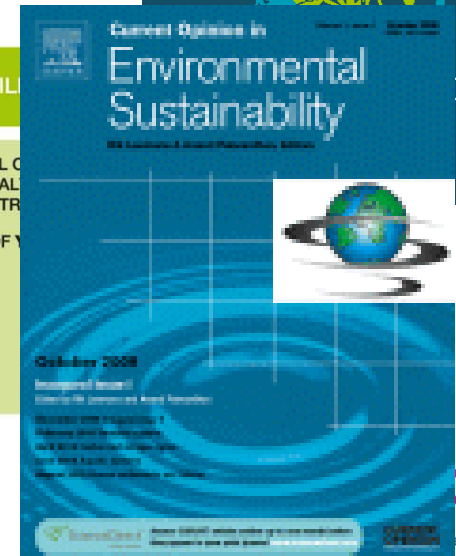
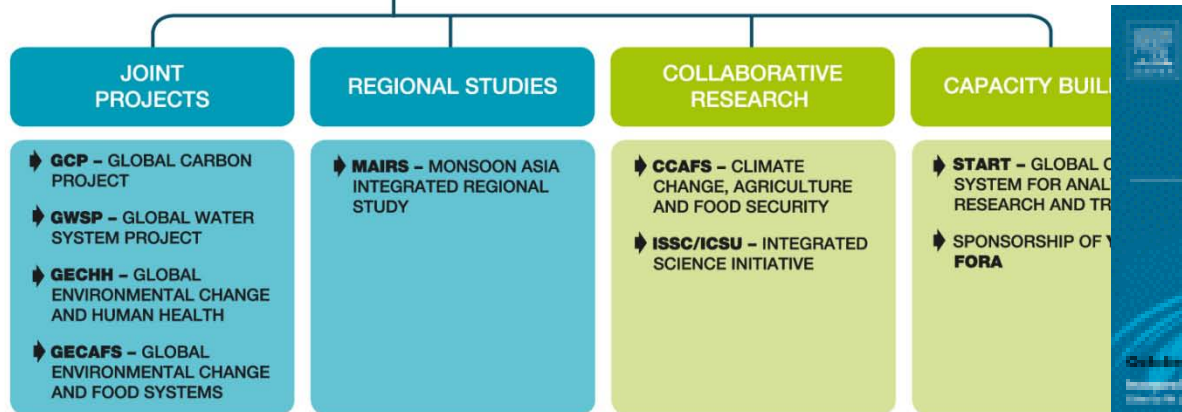
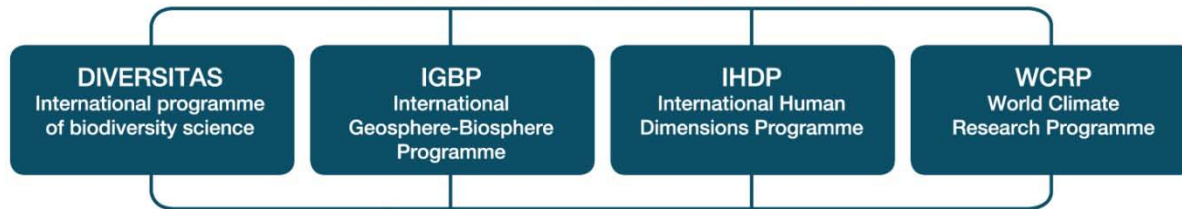
ESSP Message to GWSP

Ada Ignaciuk & Rik Leemans
GWSP SC Meeting
8 December 2010
Bonn, Germany



ESSP 'paper work'

ESSP WAS ESTABLISHED AND CO-SPONSORED BY THE FOUR INTERNATIONAL GLOBAL ENVIRONMENTAL CHANGE PROGRAMMES





ESSP Science Highlights

Earth System
Science Partnership

Highlights from 'sister' projects and collaborative research





Earth System
Science Partnership

ESSP Science Highlights -GCP

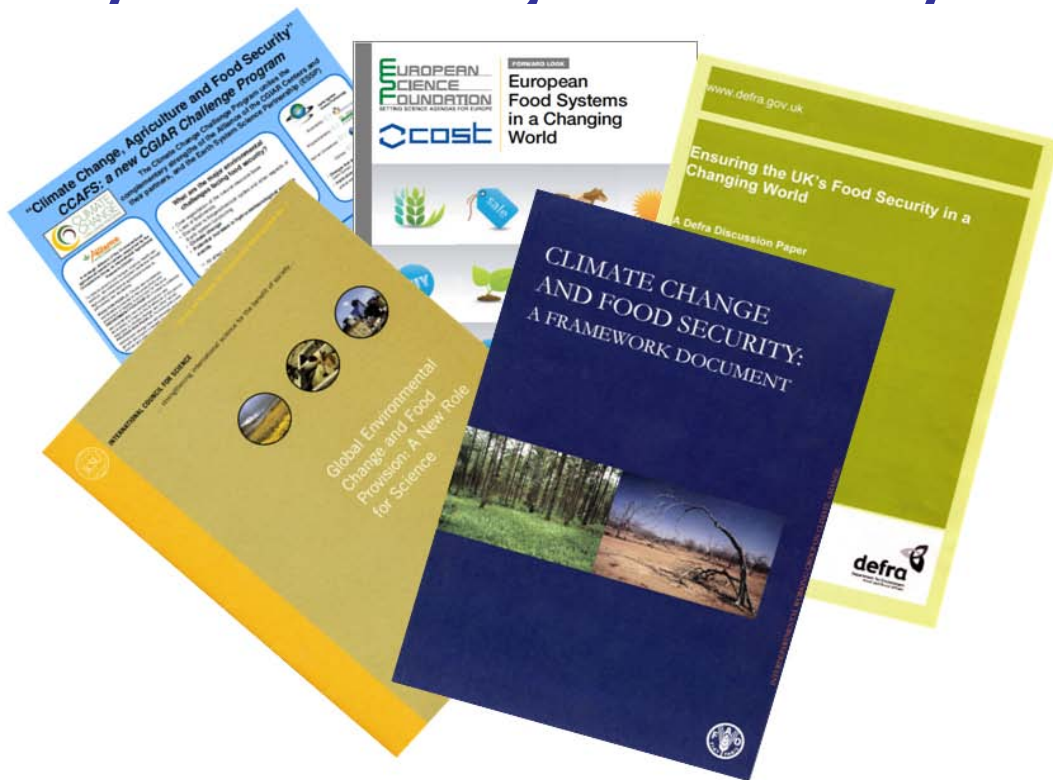
- New Budget is published:
 - Effect of the global financial crisis on fossil fuel emissions and atmospheric CO₂
 - New estimates of emissions from deforestation
 - The historical responsibility of regions
- Synthesis brochure
- Second phase of GCP
- Spin off activity - International Carbon Office



ESSP Science Highlights -GECAFS

Earth System
Science Partnership

- Synthesising their 10 year activities



e

**FOOD
SECURITY
AND
GLOBAL
ENVIRONMENTAL
CHANGE**

Edited by
John Ingram, Polly Ericksen
and Diana Liverman





ESSP Science Highlights -GECHH

Earth System
Science Partnership

- LUCILLA is here! 😊



- CCAFS remains CCAFS
- Secretariate established in Copenhagen
- SC of CCAFS will likely become enlarged
- Science meeting: 1-2 Dec, Cancun: stimulating sessions on the agenda of (new)CCAFS.
- Agriculture and Rural Development Day 2010 ("Finding sustainable agriculture solutions to meet food security and climate challenges"): 4 Dec in Cancun.
- Launch CCAFS on 4 DEC!

New activities

How to do integrative science?

Aims to address the following questions:

- What is integrative science?
- How to do integrative science?
- What are the barriers to integrative science?
- What should be done to advance integrative science?

Bioenergy Initiative

To produce a balanced and integrated view on the future of food and (bio)energy security, and its relationship with ecosystem services.

Science and Stakeholder Fora

Ongoing:

- ICSU visioning & Belmont Forum
- GEO 5
- UNFCCC-SBSTA

ICSU Visioning:

- Grand Challenges
- Open Forum on Institutional Support for the Grand Challenges
- Grand Challenges route of convergence

Draft Grand Challenges



Challenge #1: Improve the usefulness of **forecasts of future environmental conditions** and their consequences for people.

Challenge #2: Develop the **observation systems** needed to manage global and regional environmental change.

Challenge #3: Determine how to **anticipate, avoid and cope with dangerous global environmental change**.



EARTH SYSTEM VISIONING
DEVELOPING A NEW VISION AND STRATEGIC FRAMEWORK FOR EARTH SYSTEM RESEARCH

Home | Visioning Open Forum | The Visioning Process | FAQs about 'Grand Challenges' | Previous consultation

Open Forum on Institutional Support for the Grand Challenges

The registration deadline for the Open Forum has been extended to 10 June, 2010.

On 22 June, 2010, the International Council for Science (ICSU), in cooperation with the International Social Science Council (ISSC), will host in Paris an Open Forum to explore institutional frameworks that could effectively and successfully support the research and delivery of the [Grand Challenges in global sustainability research](#). This Open Forum is intended to provide a platform to facilitate exchange of information and perspectives. The themes to be discussed at this event will include:

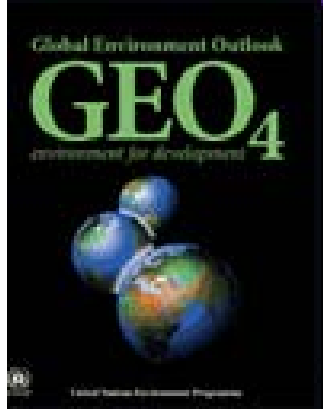
- Grand Challenges in global sustainability research
- Possible institutional frameworks to support the Grand Challenges research
- Funding perspectives
- Policy relevance/communication
- Regional perspectives

Users Online

Users: 2 Guests, 1 Bot



Collaboration with UNEP



- Global Environmental Outlook-5: to be published in 2012 and prepared in 2011.
- ESSP helped to identify authors
- Preliminary agreement with UNEP that we will handle the scientific review of GEO-5 (with financial support for the ESSP secretariat) and identify review-editors for the individual chapters.



Highlights of talks

- Ocean acidification (and warming)
- Biodiversity loss
- Planetary boundaries
- Emissions and sinks paths
- IPCC mistakes



Karma Tenzin uses a stick to measure the level of Thorthomi lake.

SBSTA 32 - Parties

Highlights of 'needs'

- Emission Pathways (1.5°, 2°, 3°)
- Identifying tipping points
- Socio-Econ Impacts
- Options twrds low C
- Regionalization of results

Conclusion: More such meetings are needed!



- UNFCCC Side Event
- ICSU/ESSP Side Event
- CCAFS workshop
- Agricultural and Rural Development Day (ARDD2)
- CCAFS launch
- Informal brainstorm about June workshop